

**ESSICK**

PARTS

PAGE 1 OF 15

MSE  
MINI-SPRAYER

# PARTS LIST

## IMPORTANT

When Ordering Parts, Always Give  
MODEL NUMBER And  
SERIAL NUMBER Of Unit

**FUBER ESSICK**

CONSTRUCTION EQUIPMENT

P.O. Box 10263, Charleston, South Carolina 29411-0263

A FIGGIE INTERNATIONAL COMPANY

Top View.....	2
Back View.....	4
Back and Front Views .....	6
Electrical Box .....	8
Pumping Unit.....	10
Bypass Valve.....	12
Pole Gun.....	14
Nozzle Head.....	14

**ESSICK**

MODEL MSE

MINI-SPRAYER

FORM NO. N4617

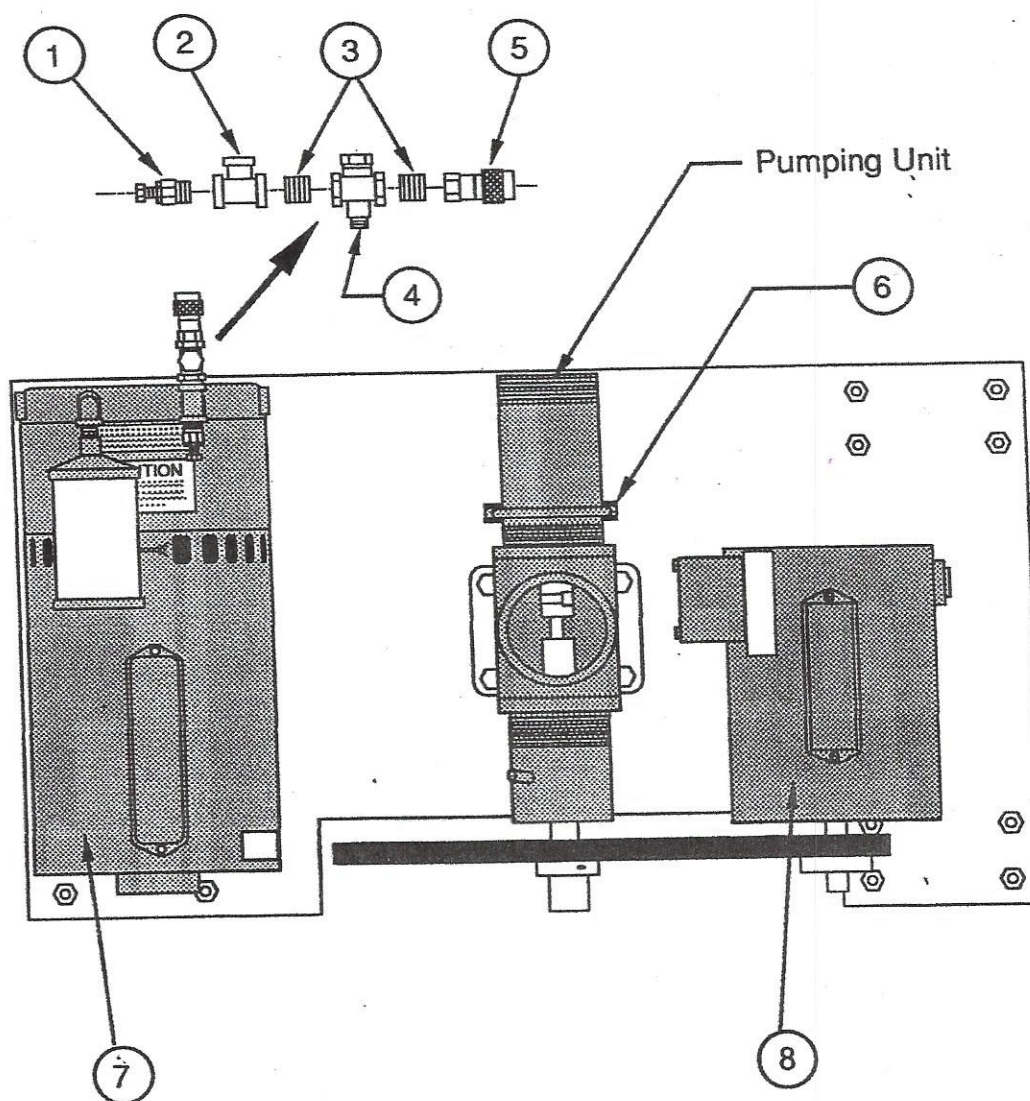
REPLACES

FORM NO. \_\_\_\_\_

PAGE

2 OF 15

TOP VIEW



IMPORTANT - WHEN ORDERING PARTS ALWAYS GIVE MODEL NUMBER AND SERIAL NUMBER OF UNIT  
PRINTED IN USA

**ESSICK**MODEL MSE  
MINI-SPRAYERFORM NO N4618  
REPLACES  
FORM NO. \_\_\_\_\_PAGE  
3 OF 15

REF NO.	DESCRIPTION	SERIAL NO. FROM TO (INCL.)		PART NO.	QTY.
1	1/4" POP-OFF VALVE	82502271		978124	1
2	1/4" x 1/4" x 3/8" REDUCING TEE	"		911268	1
3	1/4" CL NIPP	"		912019	2
4	1/4" CHECK VALVE	"		978120	1
5	1/4" FEMALE QUICK COUPLER"	"		978055	1
6	STATOR TUBE CLAMP	"		978043	1
7	COMPRESSOR	"		978116	1
8	ELECTRIC MOTOR	"		978037	1

IMPORTANT - WHEN ORDERING PARTS ALWAYS GIVE MODEL NUMBER AND SERIAL NUMBER OF UNIT  
PRINTED IN USA

**ESSICK**

MODEL MSE

FORM NO. N4619

PAGE

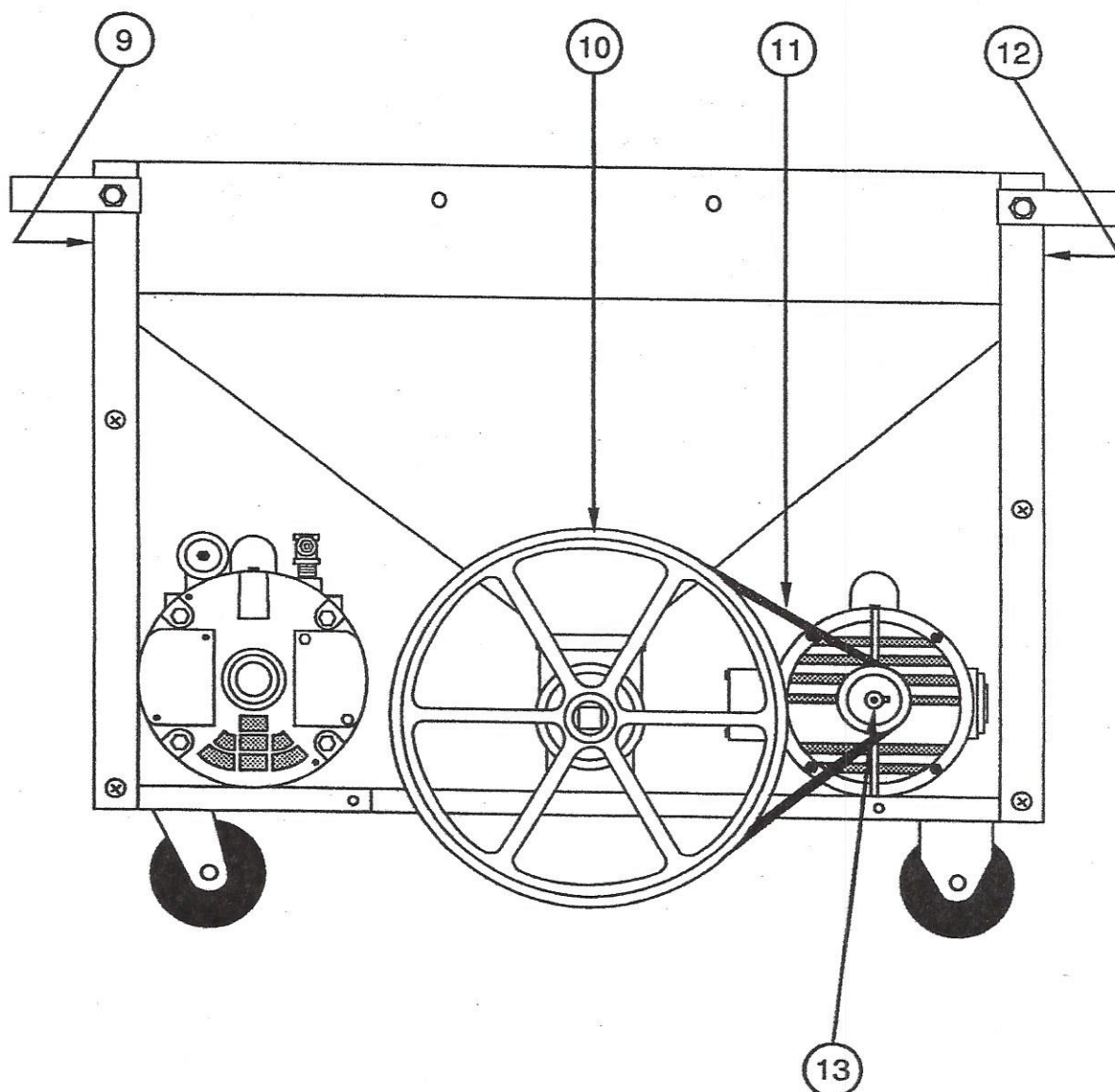
MINI-SPRAYER

REPLACES

FORM NO. \_\_\_\_\_

4 OF 15

BACK VIEW



IMPORTANT - WHEN ORDERING PARTS ALWAYS GIVE MODEL NUMBER AND SERIAL NUMBER OF UNIT  
PRINTED IN USA

**ESSICK**MODEL MSE  
MINI-SPRAYERFORM NO  
REPLACES  
FORM NO.N4620

PAGE

5 OF 15

REF NO.	DESCRIPTION	SERIAL NO. FROM TO (INCL.)		PART NO.	QTY.
9	RIGHT SIDE PANEL	82502271		978125	1
10	DRIVEN PULLEY	"		978032	1
11	DRIVE BELT	"		978034	1
12	LEFT SIDE PANEL	"		978126	1
13	DRIVE PULLEY	"		978033	1

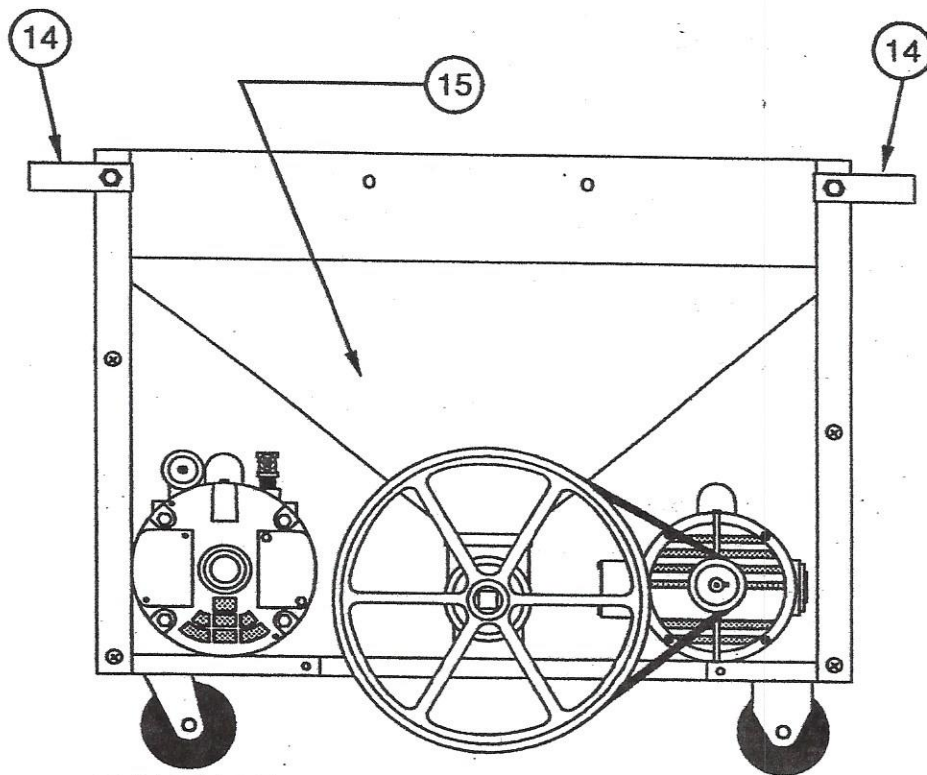
IMPORTANT - WHEN ORDERING PARTS ALWAYS GIVE MODEL NUMBER AND SERIAL NUMBER OF UNIT  
PRINTED IN USA

**ESSICK**

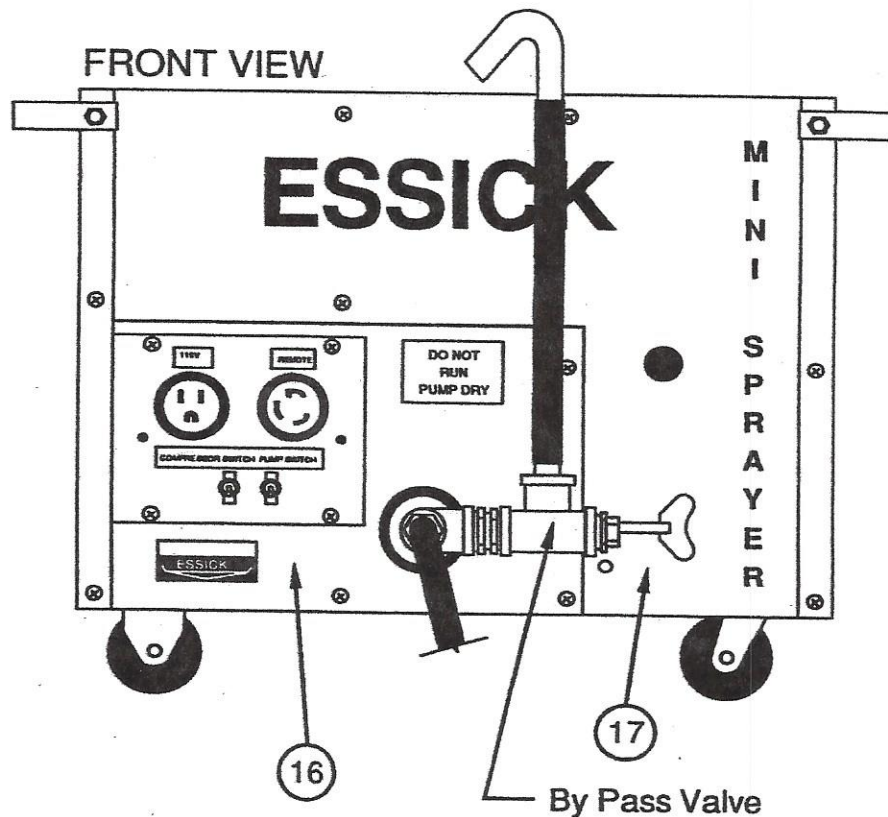
MODEL MSE  
MINI-SPRAYER

FORM NO. N4621  
REPLACES  
FORM NO.

PAGE  
6 OF 15



BACK VIEW



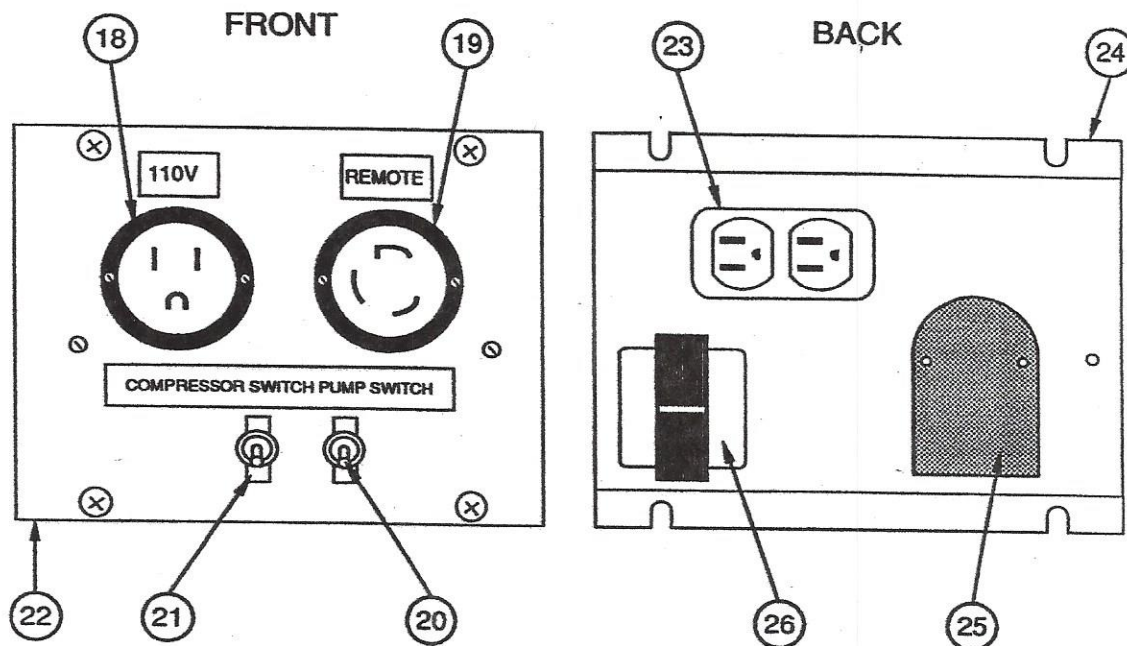
FRONT VIEW

IMPORTANT - WHEN ORDERING PARTS ALWAYS GIVE MODEL NUMBER AND SERIAL NUMBER OF UNIT  
PRINTED IN USA

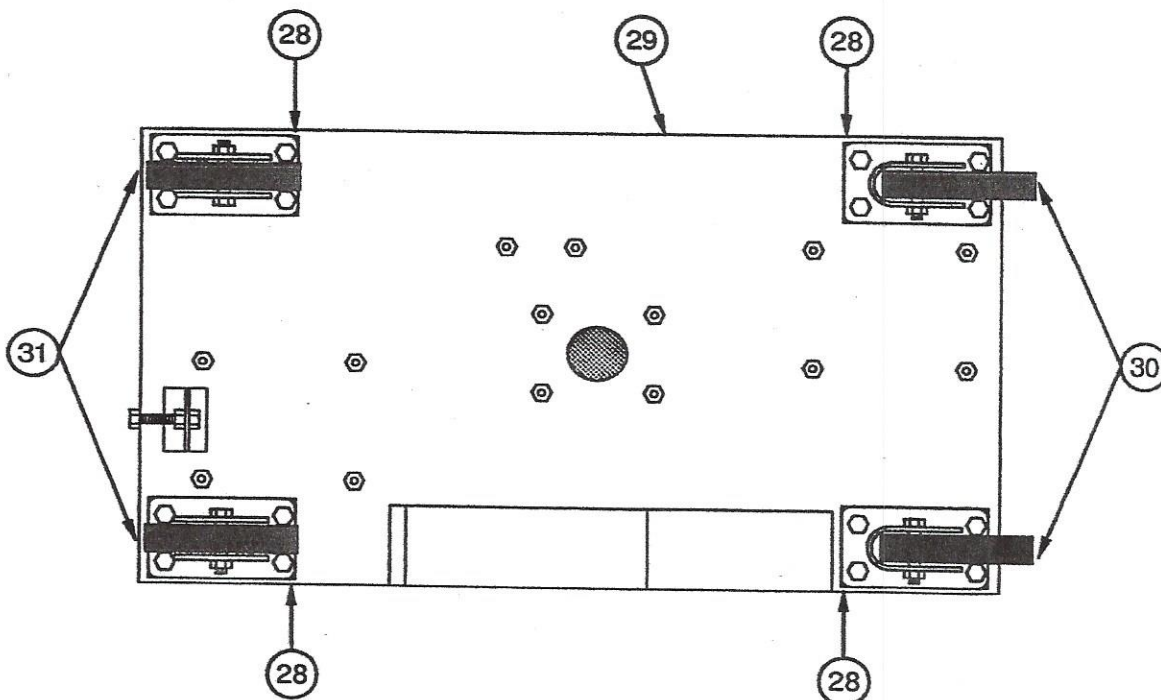
**ESSICK**MODEL MSE  
MINI-SPRAYERFORM NO N4622  
REPLACES  
FORM NO. \_\_\_\_\_PAGE  
7 OF 15

REF NO.	DESCRIPTION	SERIAL NO. FROM TO (INCL.)		PART NO.	QTY.
14	SIDE HANDLES	82502271		978051	2
15	HOPPER ASSY.	"		978050	1
16	SERVICE PANEL	"		978128	1
17	FRONT PANEL	"		978127	1

IMPORTANT - WHEN ORDERING PARTS ALWAYS GIVE MODEL NUMBER AND SERIAL NUMBER OF UNIT  
PRINTED IN USA



(27) ELECTRICAL BOX COMPLETE ASS'Y.



IMPORTANT - WHEN ORDERING PARTS ALWAYS GIVE MODEL NUMBER AND SERIAL NUMBER OF UNIT  
 PRINTED IN USA

**ESSICK**MODEL MSE  
MINI-SPRAYERFORM NO  
REPLACES  
FORM NO.N4624

PAGE

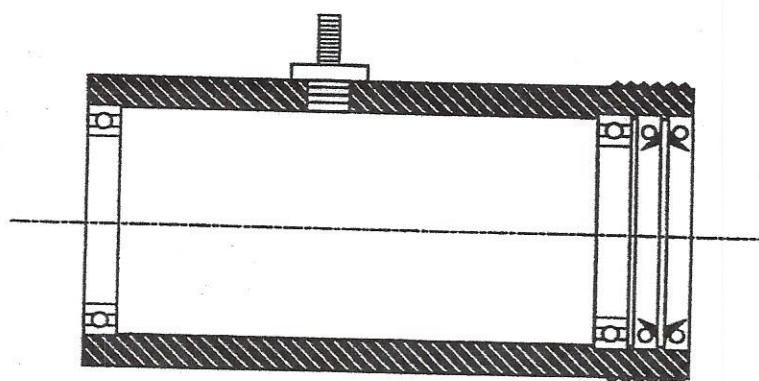
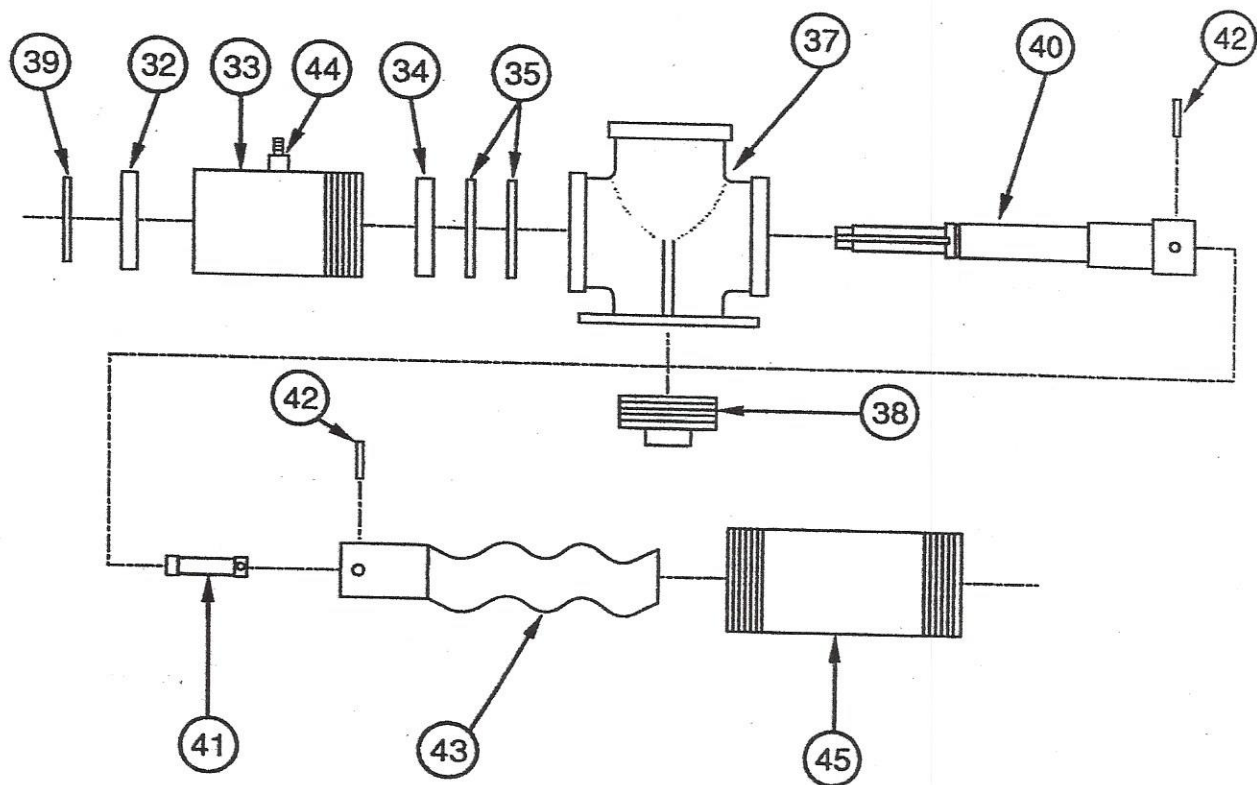
9 OF 15

REF NO.	DESCRIPTION	SERIAL NO. FROM TO (INCL.)		PART NO.	QTY
18	110 FLANGE PLUG	82502271		978131	1
19	REMOTE TWIST LOCK FLANGE PLUG	"		978119	1
20	TOGGLE SWITCH	"		978132	2
21	ON/OFF SWITCH PLATE	"		978133	2
22	ELECTRICAL BOX COVER PLATE	"		978130	1
23	DUPLEX RECEPTACLE	"		978134	1
24	ELECTRICAL BOX BOTTOM	"		978129	1
25	RELAY	"		978059	1
26	TRANSFORMER	"		978058	1
27	ELECTRICAL BOX COMPLETE ASSY.	"		978135 "504503	1
28	CASTER SPACER	"		978060	4
29	BASE PLATE	"		978122	1
30	SWIVEL CASTER	"		978049	2
31	STATIONARY CASTER	"		978047	2

G19.94

IMPORTANT - WHEN ORDERING PARTS ALWAYS GIVE MODEL NUMBER AND SERIAL NUMBER OF UNIT  
PRINTED IN USA

## 36 BEARING CARTRIDGE ASSEMBLY



Seal & Bearing Assembly Detail

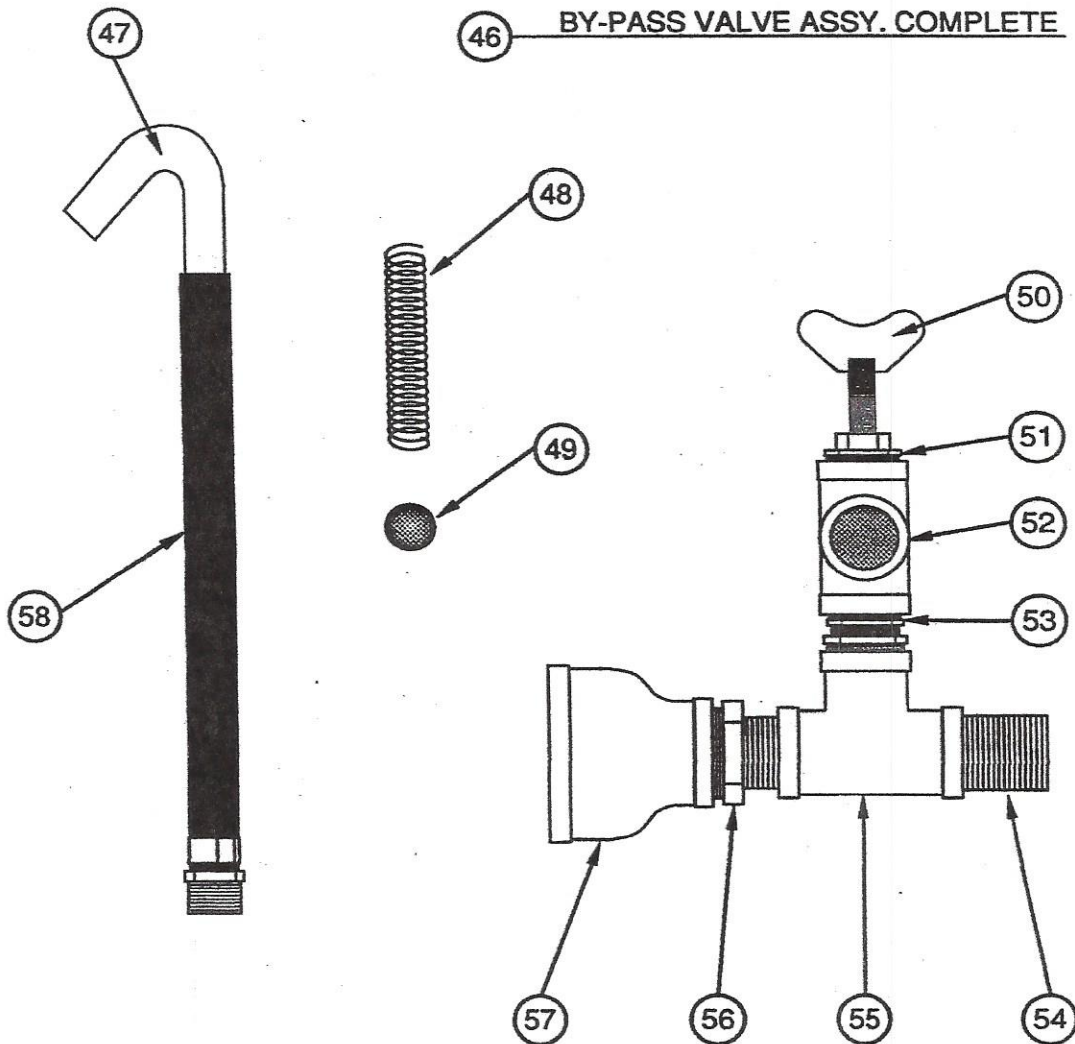
**ESSICK**MODEL MSE  
MINI-SPRAYERFORM NO  
REPLACES  
FORM NO.N4626

PAGE

11 OF 15

REF NO.	DESCRIPTION	SERIAL NO. FROM TO (INCL.)		PART NO.	QTY.
32	BEARING	82502271		<i>902060 Emg 14333</i> 978061	1
33	BEARING CARTRIDGE HOUSING	"		978026	1
34	BEARING	"		978062	1
35	SEAL	"		978063	2
36	BEARING CARTRIDGE ASSY. (INCLUDES 32, 33, 34, 39, 40, 44)	"		978039	1
37	TRANSITION TEE	"		978042	1
38	CLEANOUT PLUG - 1" PIPE PLUG	"		911100	1
39	SNAP RING	"		978065	1
40	PUMP SHAFT	"		978025	1
41	CONNECTING ROD	"		978024	1
42	PUMP PINS	"		402151	2
43	PUMP ROTOR	"		978028	1
44	GREASE HOSE FITTING	"		978064	2
45	STATOR TUBE	"		978027	1

IMPORTANT - WHEN ORDERING PARTS ALWAYS GIVE MODEL NUMBER AND SERIAL NUMBER OF UNIT  
PRINTED IN USA



IMPORTANT - WHEN ORDERING PARTS ALWAYS GIVE MODEL NUMBER AND SERIAL NUMBER OF UNIT  
PRINTED IN USA

**ESSICK**MODEL MSEMINI-SPRAYERFORM NO  
REPLACES  
FORM NO.N4628

PAGE

13 OF 15

REF NO.	DESCRIPTION	SERIAL NO. FROM TO (INCL.)		PART NO.	QTY
46	BYPASS VALVE ASSY. COMPLETE (REF. 47-57)	82502271		978056	1
47	BYPASS ALUMINUM ELBOW	"		978023	1
48	SPRING	"		978020	1
49	BYPASS BALL	"		978021	1
50	HANDLE	"		978067	1
51	HANDLE BUSHING	"		978068	1
52	BYPASS VALVE ONLY (INCLUDES 48, 49, 50, 51, 53)	"		978069	1
53	SEAT BUSHING	"		978022	1
54	NIPPLE	"		978070	2
55	PIPE "T"	"		978071	1
56	PIPE BUSHING	"		978072	1
57	BELL REDUCER	"		978073	1
58	BYPASS HOSE	"	"	978142	1

IMPORTANT - WHEN ORDERING PARTS ALWAYS GIVE MODEL NUMBER AND SERIAL NUMBER OF UNIT  
PRINTED IN USA



**ESSICK**MODEL MSE  
MINI-SPRAYERFORM NO  
REPLACES  
FORM NO.N4630

PAGE

15 OF 15

REF NO.	DESCRIPTION	SERIAL NO. FROM TO (INCL.)	PART NO.	QTY.
59 60	COMPLETE POLE GUN ASSY. NOZZLE AIR LINE	82502271 "	978078 978074	1 1
61 62	SHORT ALUMINUM PIPE ALUMINUM PIPE COUPLING	" "	978075 978076	1 1
63 64	LONG ALUMINUM PIPE AIR ADJUSTING VALVE	" "	978077 978019	1 1
65 66	MALE AIR QUICK COUPLER MATERIAL SHUTOFF VALVE	" "	978080 978018	1 1
67 68	BRACKET NOZZLE ASSY. COMPLETE	" "	978079 978081	1 1
69 70	RETAINING RING THUMB SCREW	" "	978035 978082	1 1
71 72	AIR STEM, LARGE HOLE AIR STEM ELBOW	" "	978136 978017	1 1
73 74	NOZZLE BUSHING NOZZLE HEAD BODY ONLY	" "	978083 978084	1 1
75 76	3/16" ORIFICE 1/4" ORIFICE	" "	978013 978014	1 1
77	5/16" ORIFICE	"	978015	1

## PARTS NOT SHOWN

	BACK SERVICE PANEL	"	978137	1
	COMPLETE HOSE ASSY.	"	978085	1
	PUMP WRENCH	"	978138	1
	WTRPRF REMOTE SWITCH	"	978031	1
	SWITCH BRACKET	"	978086	1
	HOPPER O-RING	"	978087	2
	BACK PANEL	"	978139	1
	HOPPER EXTENSION	"	978088	OPT
	BYPASS HOSE (HOPPER EXTENSION)	"	978143	OPT
	HOPPER SEAL GASKET	"	978140	1
	HOPPER GASKET WASHER	"	978141	1

IMPORTANT - WHEN ORDERING PARTS ALWAYS GIVE MODEL NUMBER AND SERIAL NUMBER OF UNIT  
PRINTED IN USA

# OPERATING AND MAINTENANCE INSTRUCTIONS

## MINI SPRAYER MACHINE

### SAFETY

1. DO NOT OPERATE OR SERVICE THIS EQUIPMENT BEFORE READING THE OPERATING AND MAINTENANCE INSTRUCTION MANUAL.
2. DO NOT OPERATE THIS EQUIPMENT UNLESS ALL GUARDS AND SAFETY DEVICES ARE ATTACHED AND IN PLACE.
3. STOP MOTOR WHEN LEAVING EQUIPMENT.
4. BLOCK UNIT WHEN PARKING ON A SLOPE.
5. MAINTAIN THIS EQUIPMENT IN SAFE OPERATING CONDITION AT ALL TIMES.
6. CAUTION MUST BE EXERCISED WHILE SERVICING THIS EQUIPMENT. ROTATING AND MOVING PARTS CAN CAUSE INJURY IF CONTACTED.
7. KEEP ALL INEXPERIENCED AND UNAUTHORIZED PEOPLE AWAY FROM EQUIPMENT AT ALL TIMES.
8. UNAUTHORIZED EQUIPMENT MODIFICATIONS WILL VOID ALL WARRANTIES.
9. OPEN BY-PASS VALVE TO RELIEVE BACK PRESSURE BEFORE DISCONNECTING GUN OR HOSES.
10. STOP MOTOR BEFORE PUTTING HANDS IN HOPPER.
11. WEAR SAFETY EYE GLASSES AT ALL TIMES WHEN WORKING AROUND MACHINE OR MATERIAL LINES.

**HUBER ESSICK****CONSTRUCTION EQUIPMENT**

P.O. Box 10263, Charleston, South Carolina 29411-0263

A FIGGIE INTERNATIONAL COMPANY

## Assembly and Operating Instructions

ASSEMBLY INSTRUCTIONS

1. Connect female end of 3/4" material hose to threaded end of pump outlet/by-pass valve.
2. Connect male quick-coupler end of 3/8" air line to female quick-coupler fitting located above pump outlet/by-pass valve.
3. Plug 3 prong male electrical cord connector into matching female connector.
4. Install opposite end of 3/4" material hose to nozzle.
5. Connect quick-coupler end on 3/8" air line to male quick-coupler fitting located at nozzle.
6. Using 3 prong extension cord, plug into 3 prong connector and into any standard 110 volt household electrical plug outlet.

Machine is now ready to operate

NOTE: The Essick MINI-SPRAYER was exclusively designed to spray the following non-aggregate materials:

- \* Full and Simulated Accoustic
- \* Wall Texture
- \* Fireproofing Materials

For best results, make certain that the material to be sprayed is mixed properly, according to manufacturers recommendations, and had an even consistency. DO NOT mix material to be sprayed, in hopper.

OPERATING INSTRUCTIONS:

1. Check to see that the on-off switch located on the hopper and the on-off switch located directly below the nozzle assembly is in the off position (pushed in).
2. Pour mixed material into the hopper.
3. Turn the compressor on-off switch to the on position.
4. Holding the nozzle assembly, inspect removeable orifice tip for proper size, then adjust air stem at the tip, in or out, to change the pattern of material being applied. Turn the air valve located on the lower end of the nozzle assembly just above the material on-off handle, to the on position.
5. Turn the handle on the lower end of the nozzle assembly to the on position (this opens the material line).

6. Pull the on-off switch located on the hose assembly just below the nozzle to turn on the machine and spray your material. NOTE: SEE BELOW
7. When you wish to stop spraying, simply push the same on-off switch in and the material pump will immediately shut down. Note: The air compressor will continue to run until turned off at the hopper (see step 3).

#### CLEANING INSTRUCTIONS:

1. After all material has been removed from the hopper, fill with clean water and repeat steps 2 thru 6 until all material remaining in hopper, material hose and nozzle assembly has been flushed out. The water should spray clear when proper cleanout has been accomplished.

#### BY-PASS USAGE INSTRUCTIONS:

Note: The by-pass valve is mainly intended to be used when spraying wall texture materials and to relieve hose back pressure before disconnecting.

1. Locate by-pass valve at front of machine.
2. To reduce material output of pump, back out the butterfly handle on the By-pass valve until desired volume of material is attained. When by-pass is being used, material will automatically recirculate from the hopper thru the by-pass valve and back into the hopper via the by-pass hose.
3. To return pump to non by-pass operation, simply turn in the butterfly handle all the way for full flow or until desired increased material volume is attained.

Note: If rotor will not start, use pumpshaft wrench at rear to break rotor free.

Caution: Do not leave switch on or wrench will swing and may cause serious injury.